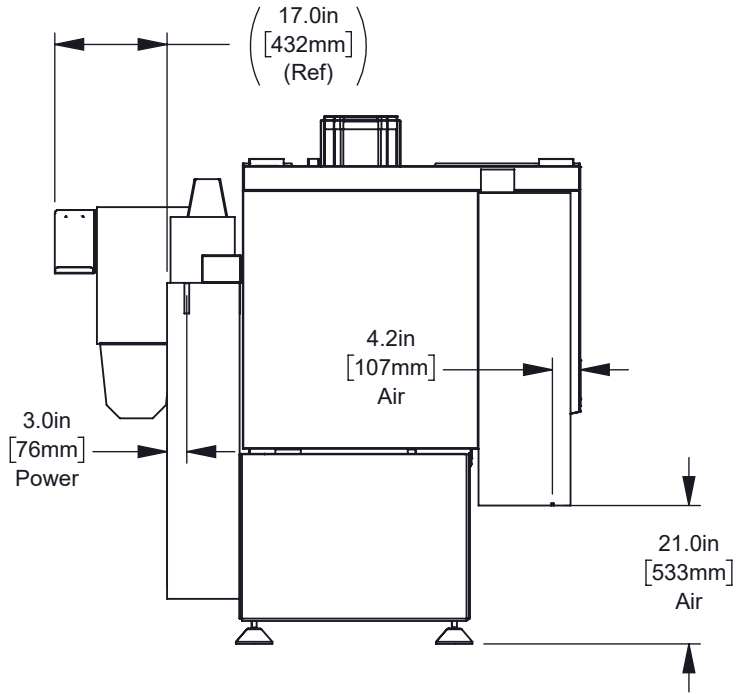
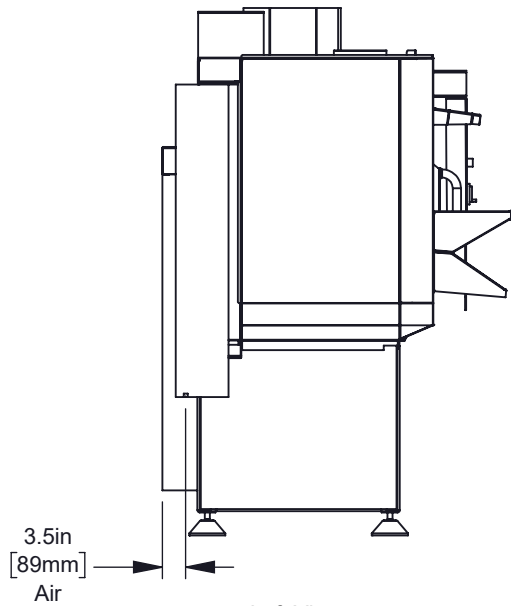


All dimensions based on stackup of sheetmetal, subject to variation of 1/2" (13 mm)

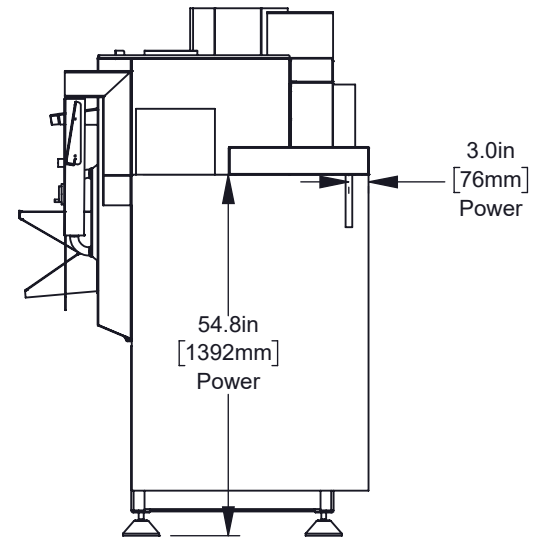
Air & Power



Rear View



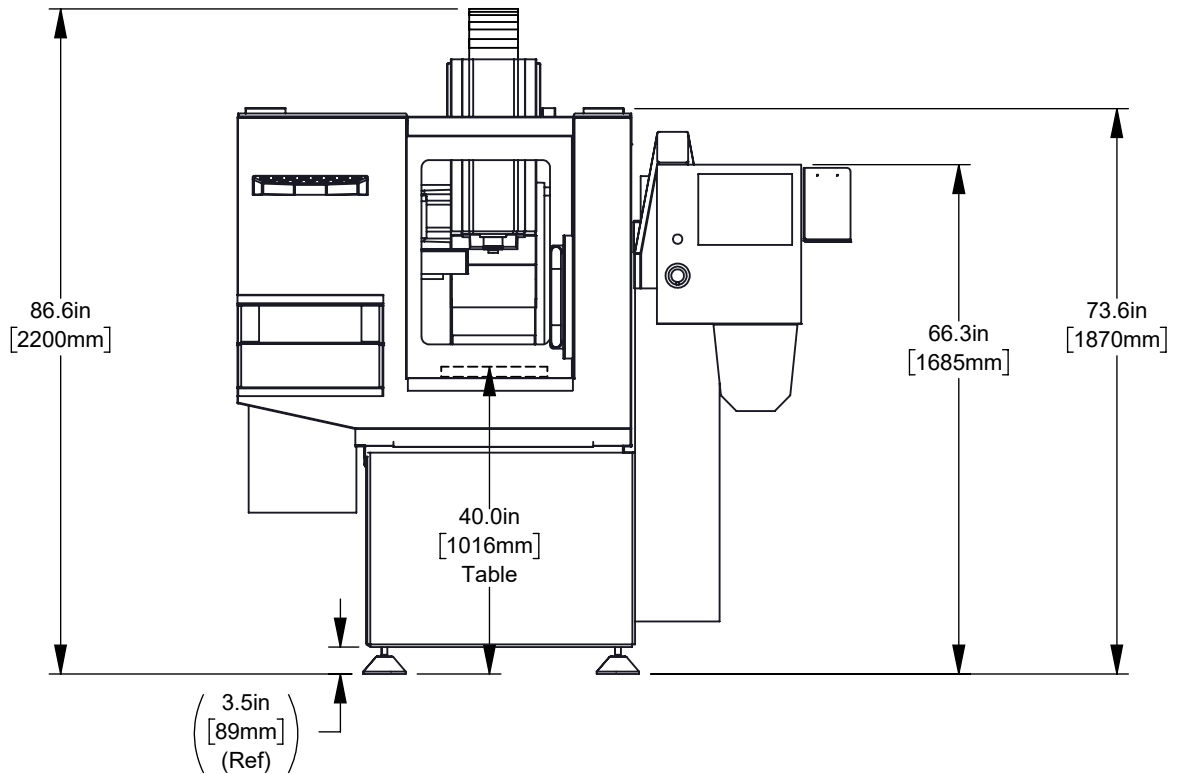
Left View



Right View

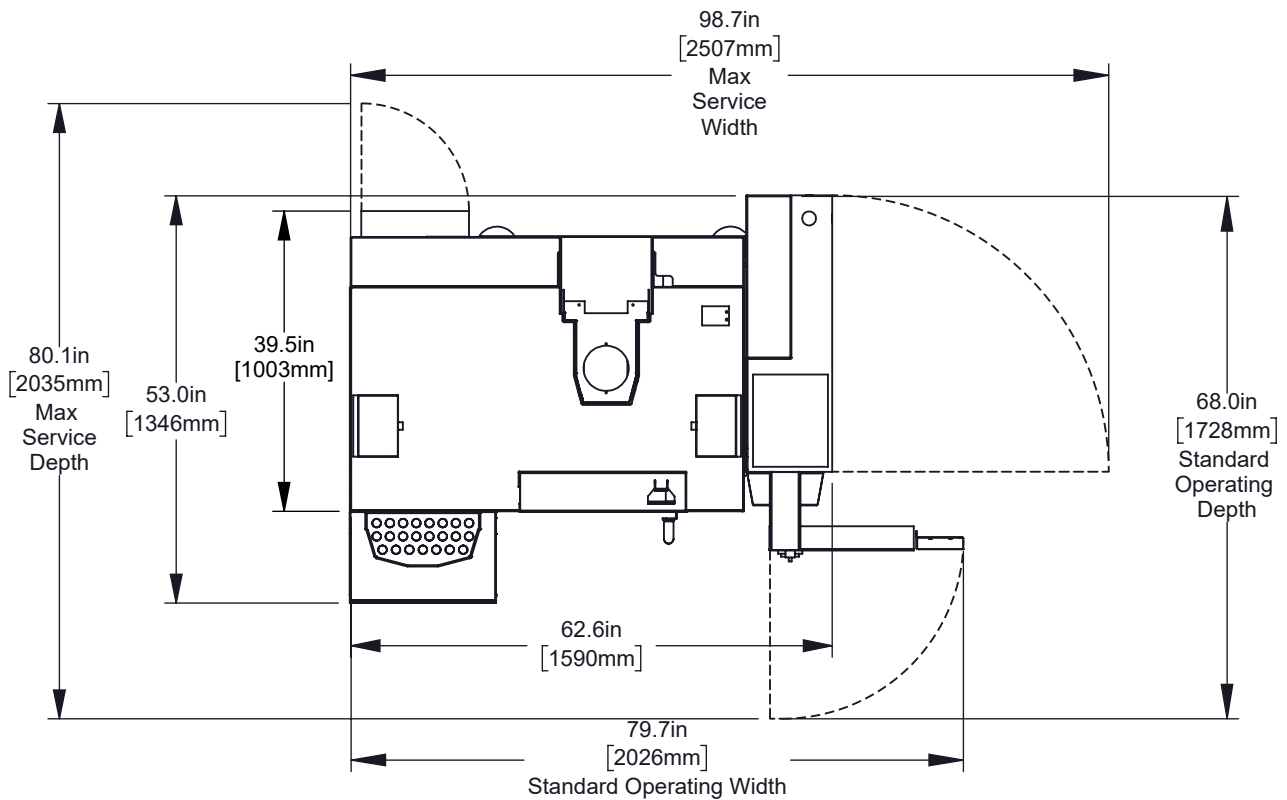
All dimensions based on stackup of sheetmetal, subject to variation of 1/2" (13 mm)

Height Breakdown



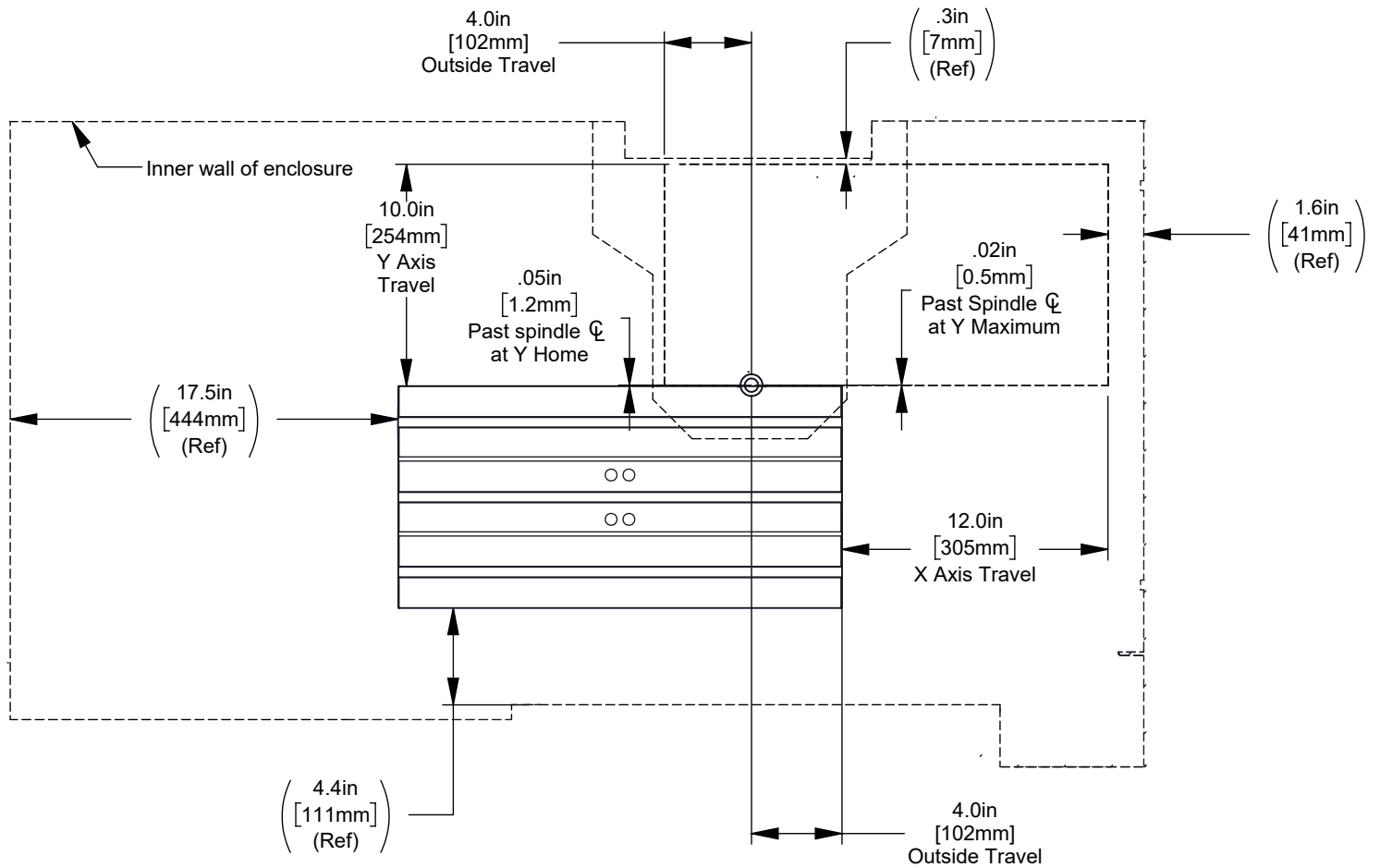
All dimensions based on stackup of sheetmetal, subject to variation of 1/2" (13 mm)

Width Breakdown

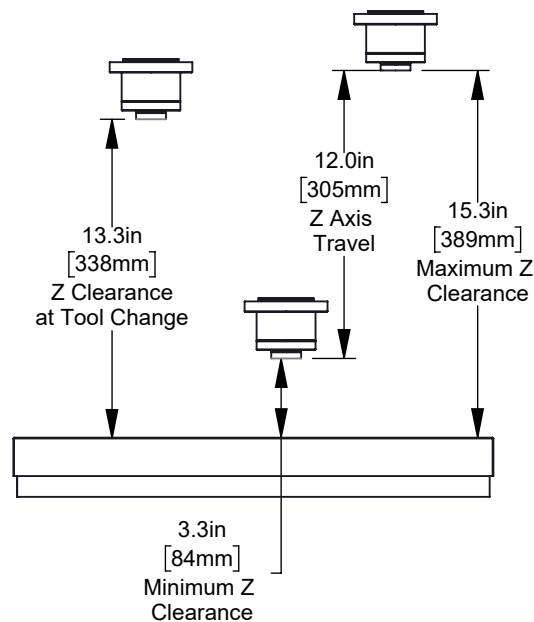


All dimensions based on stackup of sheetmetal, subject to variation of 1/2" (13 mm)

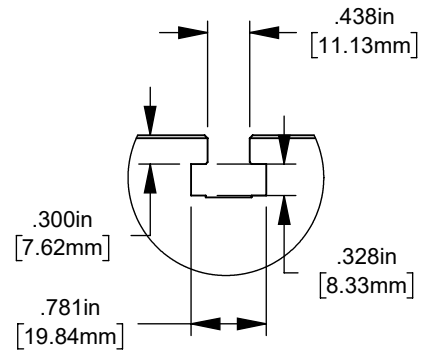
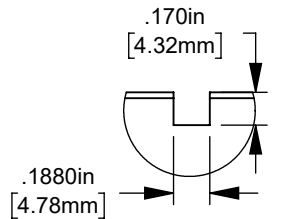
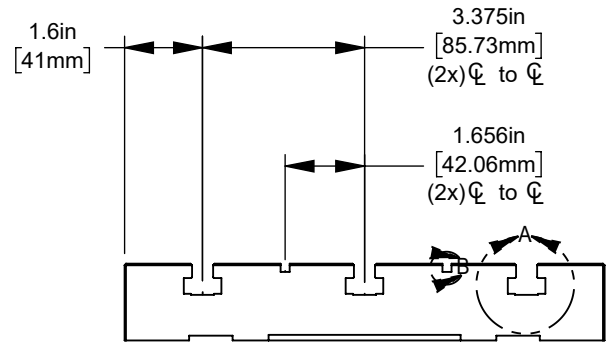
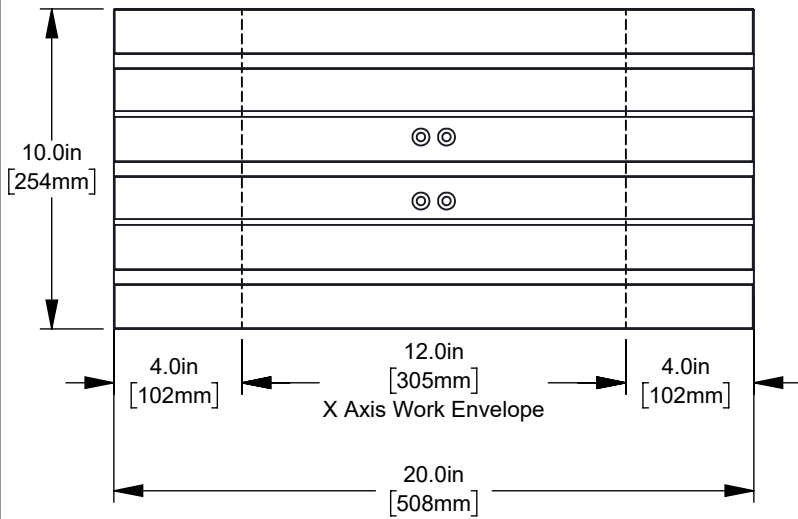
X&Y-Axis Clearance



Z-Axis Clearance



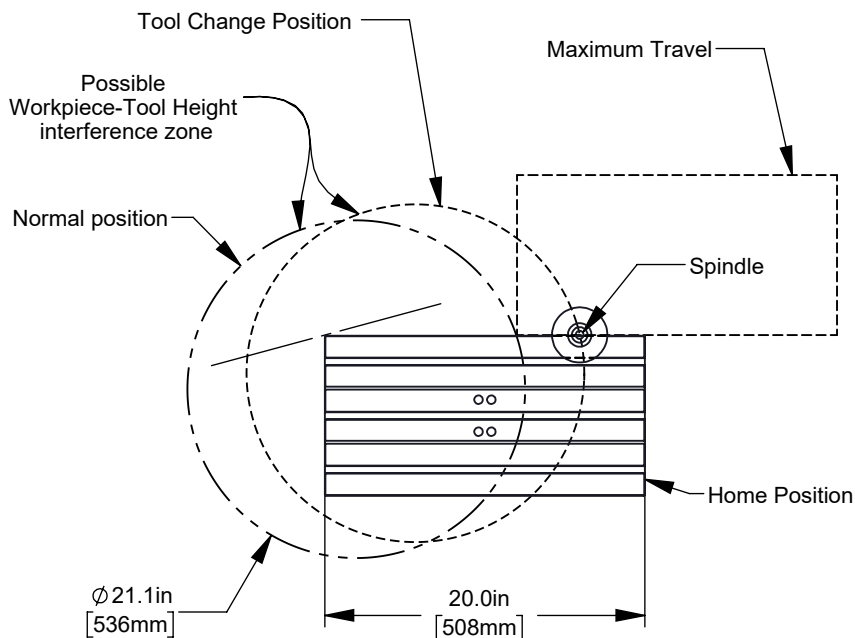
Table



Small Slot Detail

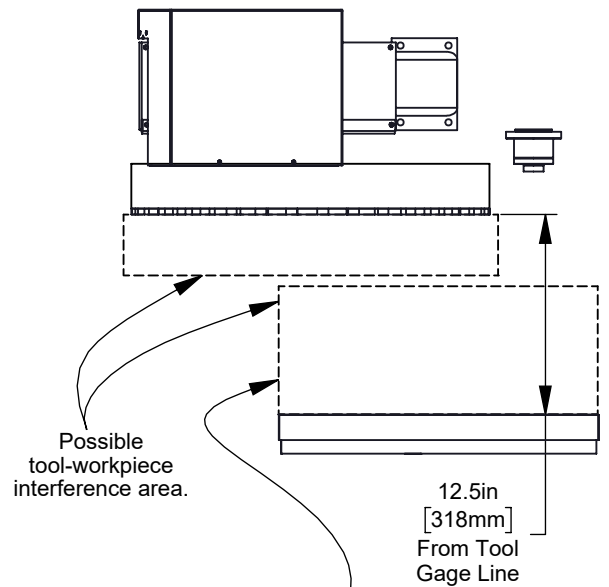
T-Slot Detail

Tool Changer



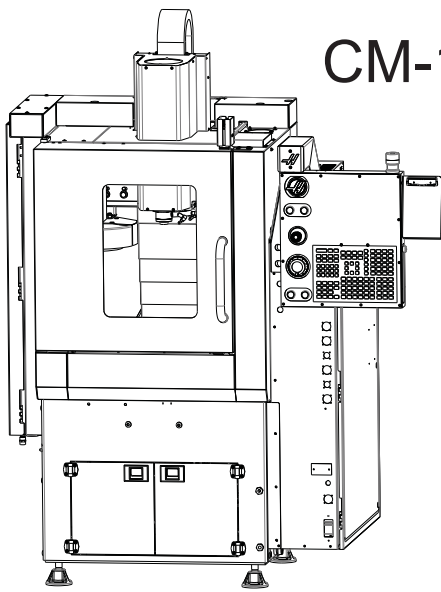
Note - Tool interference diagram represents a theoretical 0.000 ϕ tool interference. Add the tool radius to the diagram for your specific layout or application

Note - If using the TRT70 or other tall workholding, pay close attention to the 12.5in [318mm] Tool + Work + Clearance maximum

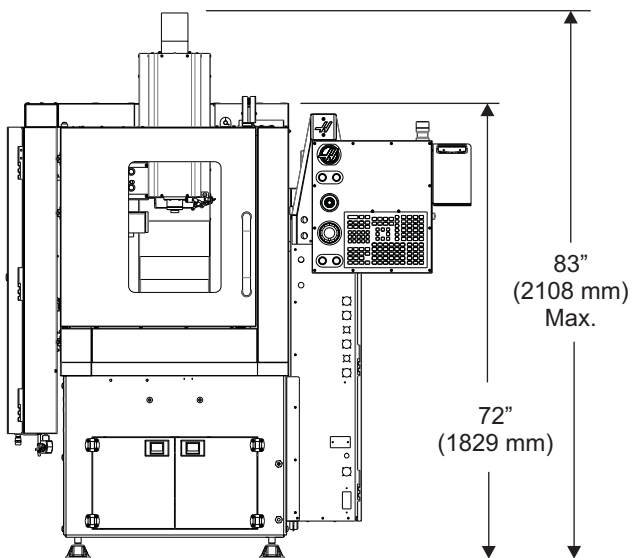
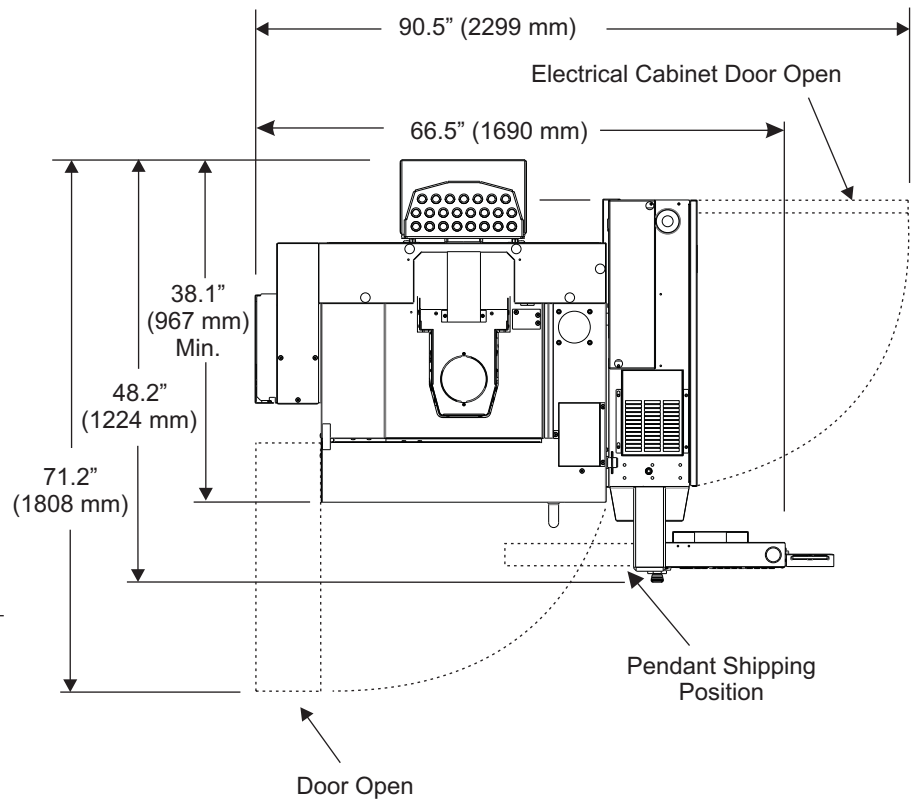
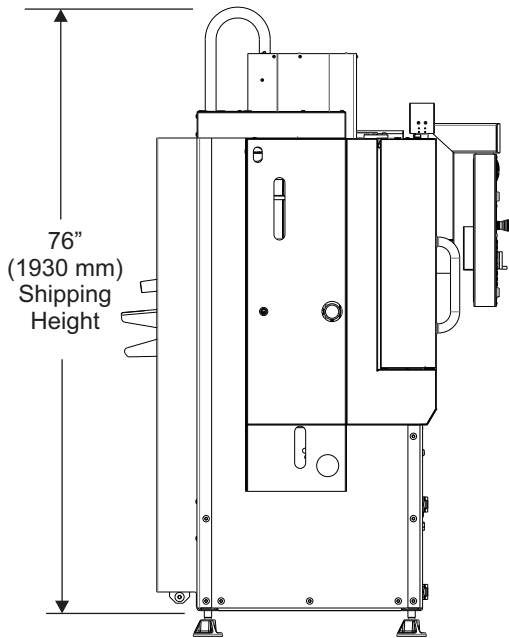
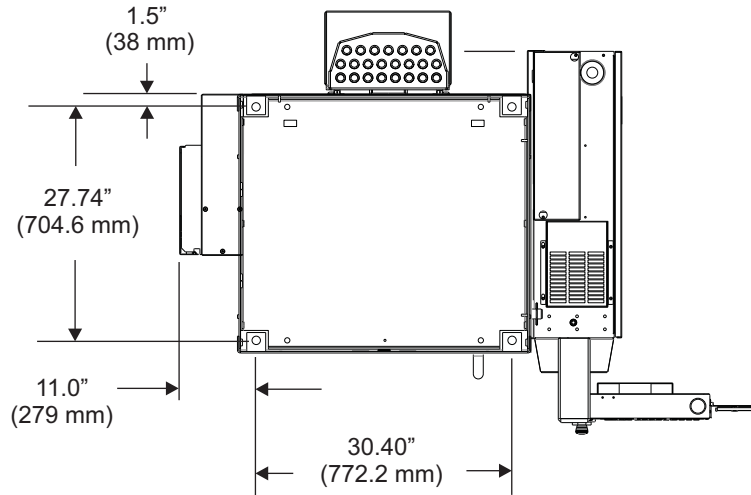


Maximum table projection height without interference = (12.5in [318mm]) - (Longest tool gage length) + Clearance

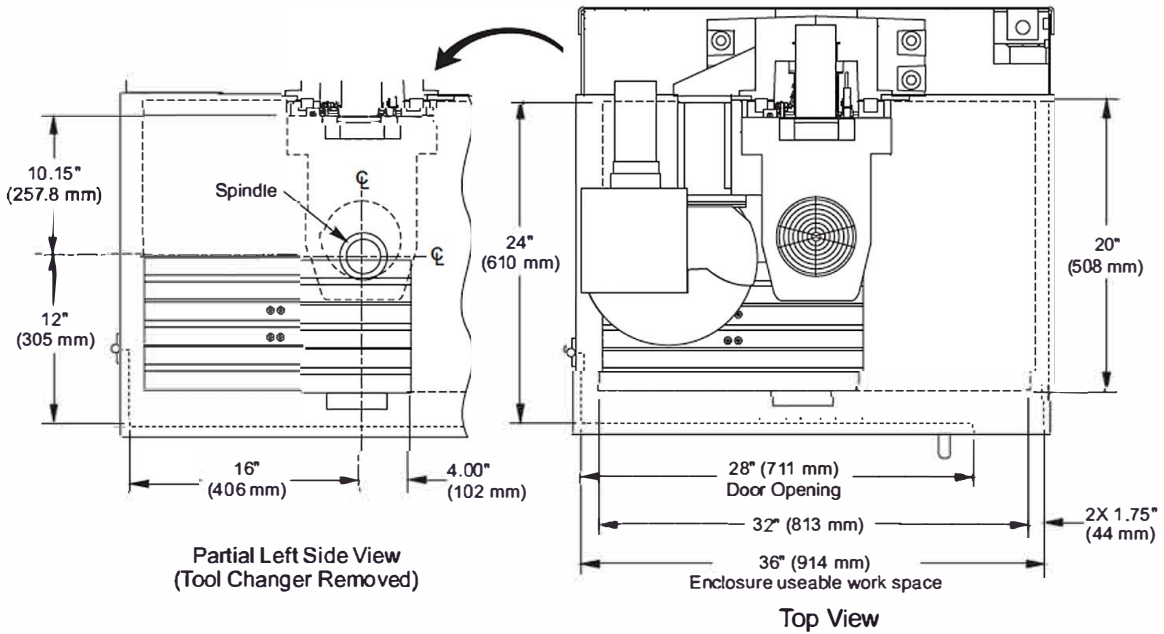
CM-1 With 20-Pocket Tool Changer



Leveling Pad Locations
(base shown for clarity)



CM-1 With 20-Pocket Tool Changer



Enclosure Work Space

